

CORMAGH

19500 E

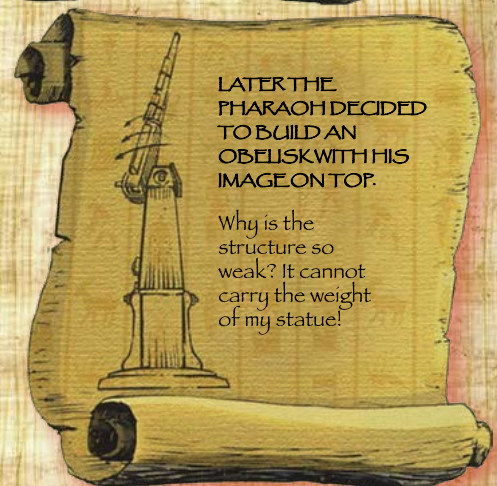
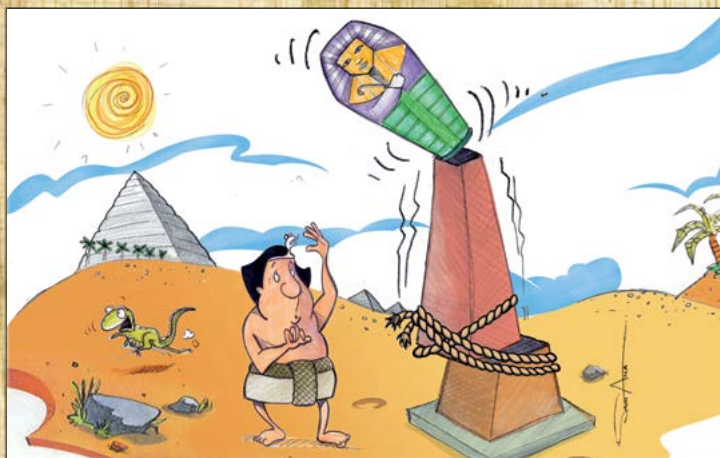
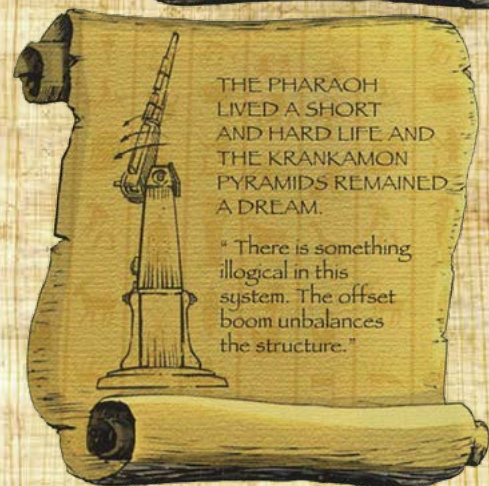
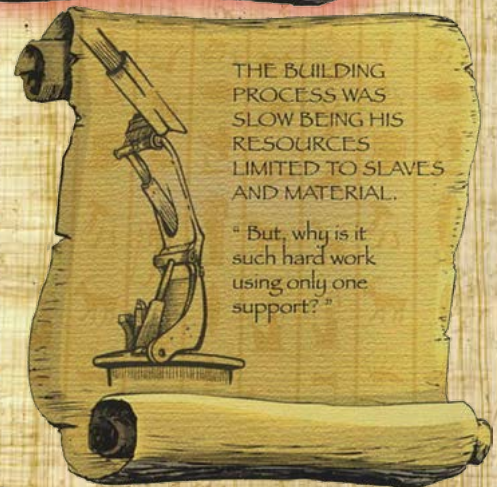
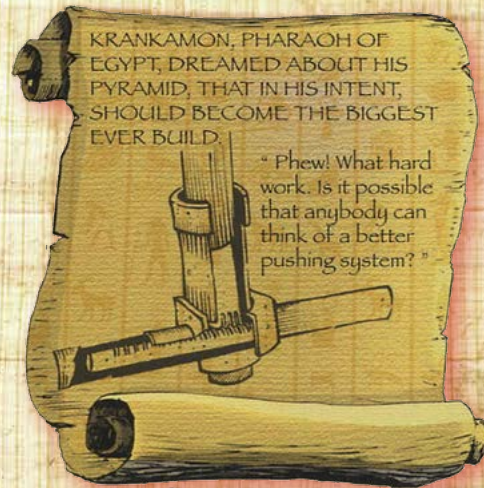
Quality Management
ISO 9001:2008

► Voluntary participation
in regular monitoring

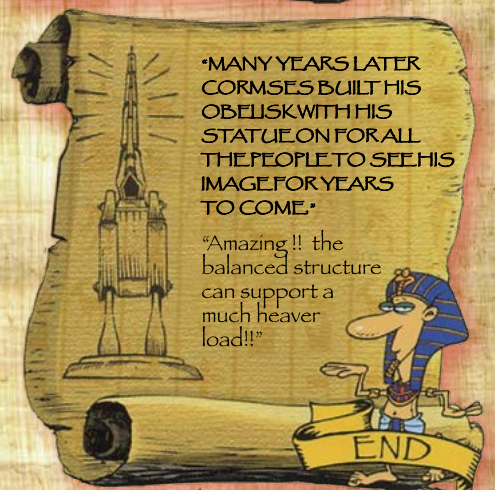
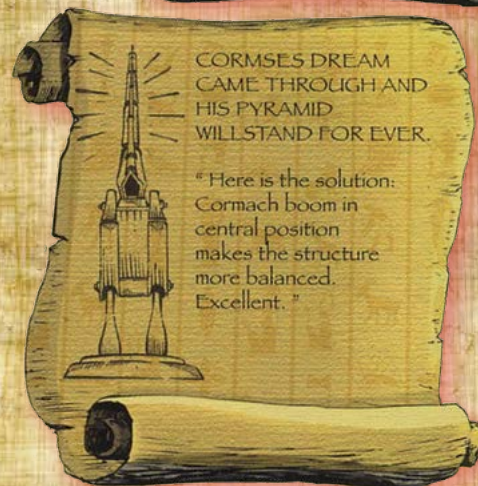
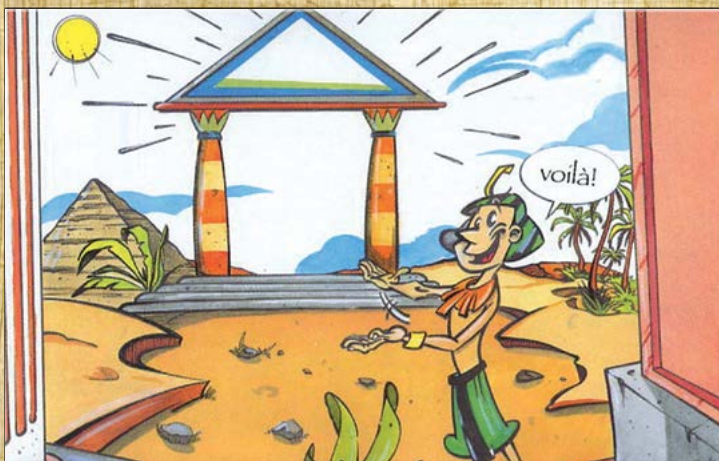
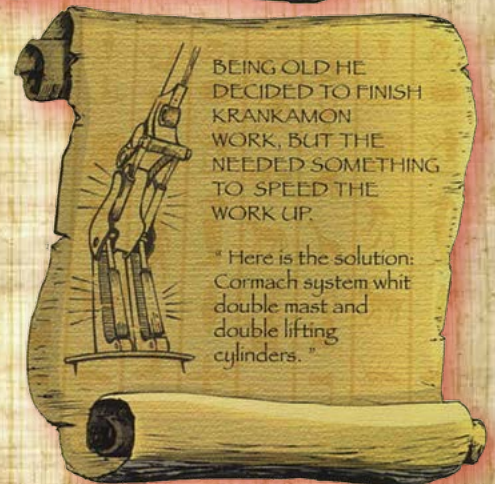
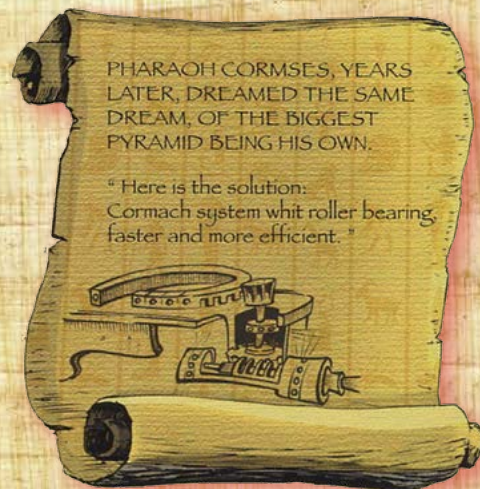


www.cormach.com

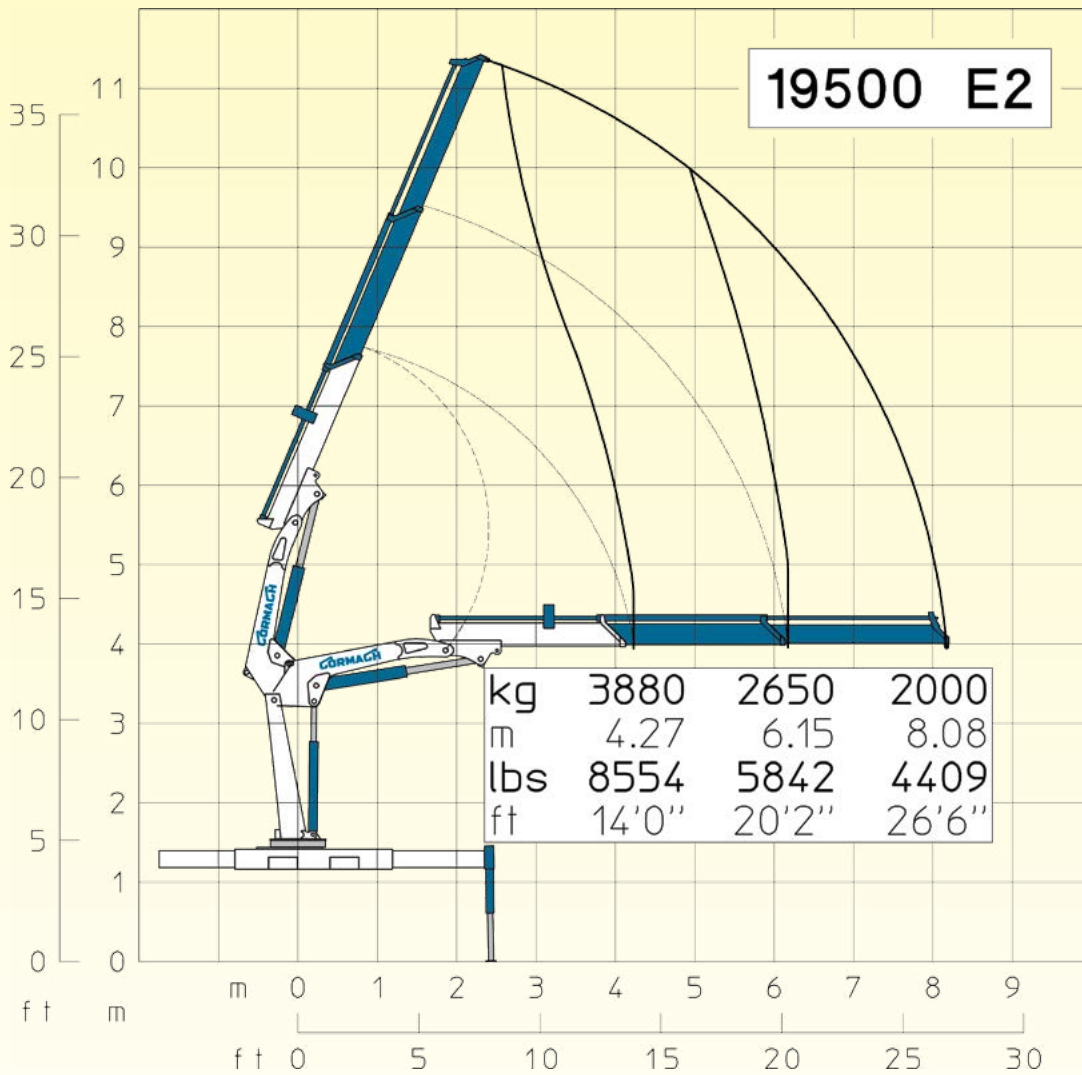
... ABOUT ANCIENT



EGYPT MANUSCRIPTS



19500 E2

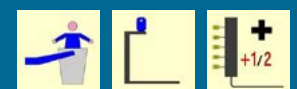


E2	E2	
19500 daN*m	141044 Lb*ft	Momento statico massimo al perno torretta • Max. static moment at the turret pin Moment statique max. a l'axe de la tourelle • Max. statisches ubmoment am kransaulenbolzen
8.08 m	26'6"	Sbraccio idraulico • Hydraulic boom length Longueur du bras hydraulique • Hydraulic reichweite
		Sbraccio con prolunghe manuali • Boom length with manual extensions Longueur du bras avec rallonges manuelles
1750 daN*m	12658 Lb*ft	Coppia di rotazione • Slew torque • Moment de rotation • Drehmoment
32 s 360°	32 s 360°	Tempo di rotazione • Slewing speed • Temp de rotation • Schwenkgeschwindigkeit
1610+1350mm	5'3" + 4'5"	Uscita stabilizzatori (*) • Outriggers extensions (*) Sortie des bequilles (*) • Breite der abstützung (*)
5325 mm	17'6"	Larghezza stabilizzatori (**) • Outriggers width (**) Largeur des bequilles (***) • Breite der abstützung (**)
790 mm	2'7"	Lunghezza • Length • Longueur • Länge
2478 mm	8'2"	Larghezza • Width • Largeur • Breite
2310 mm	7'7"	Altezza • Height • Hauteur • Höhe
2000 kg	4409 lbs	Peso (senza olio e montaggio) • Weight (without oil and fitting) Poids (sans huile et montage) • Gewicht (ohne öl und ohne)
50 l/min	13 us gal/min	Portata pompa (***) • Pump delivery (***) • Capacité de la pompe (***) • Pumpenheistung (***)
290 bar	4206 psi	Pressione • Pressure • Pression • Druck
120 l	31 us gal	Capacità serbatoio olio • Oil tank capacity • Capacité de reservoir d'huile • Öl tank inhalt

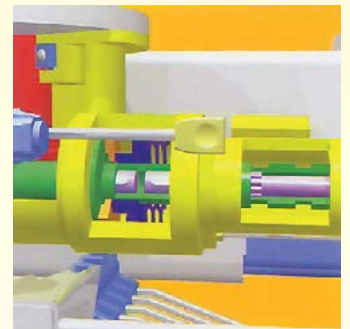
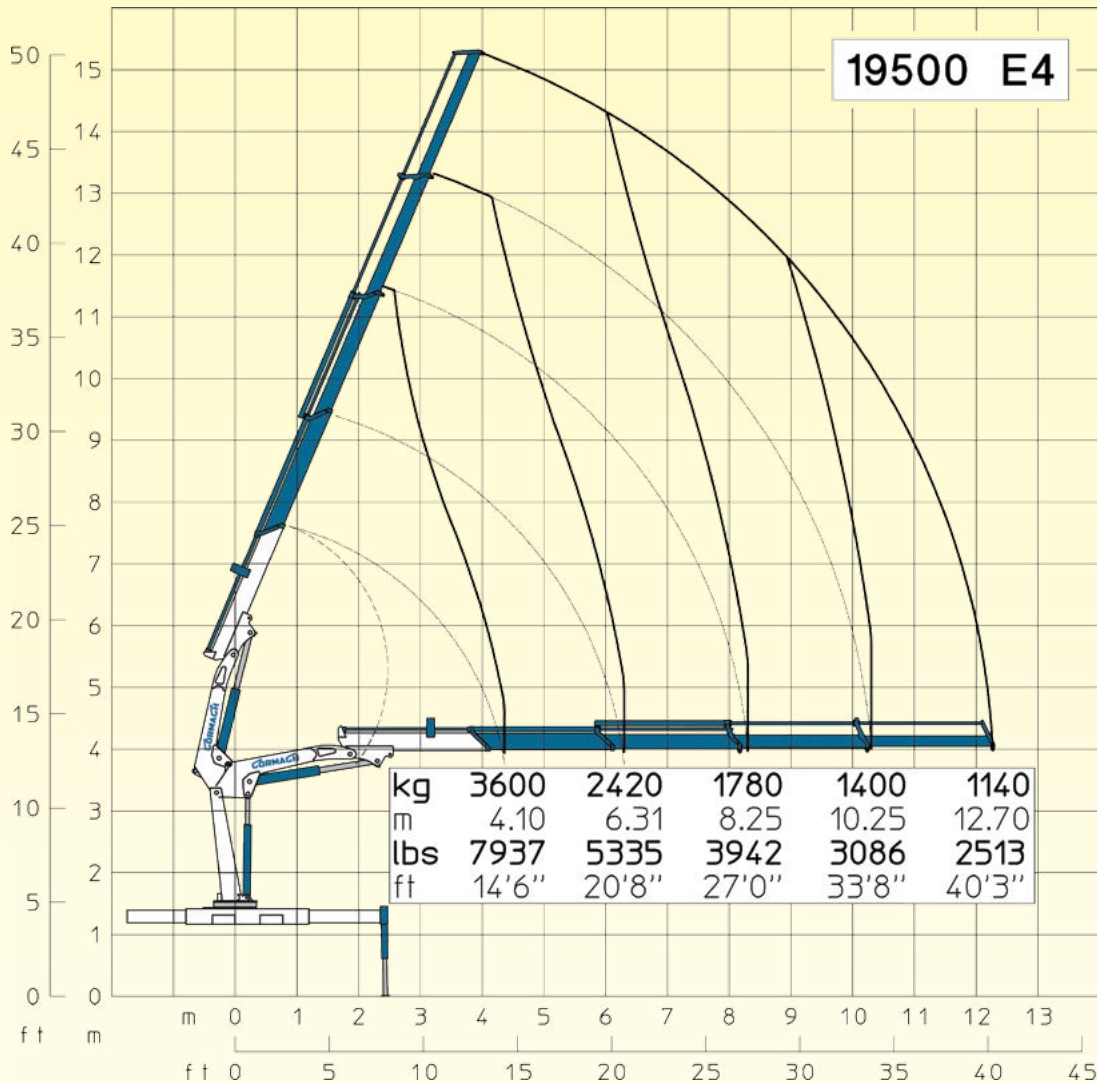
STANDARD



OPTIONAL



19500 E4

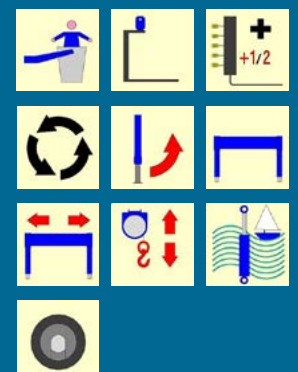


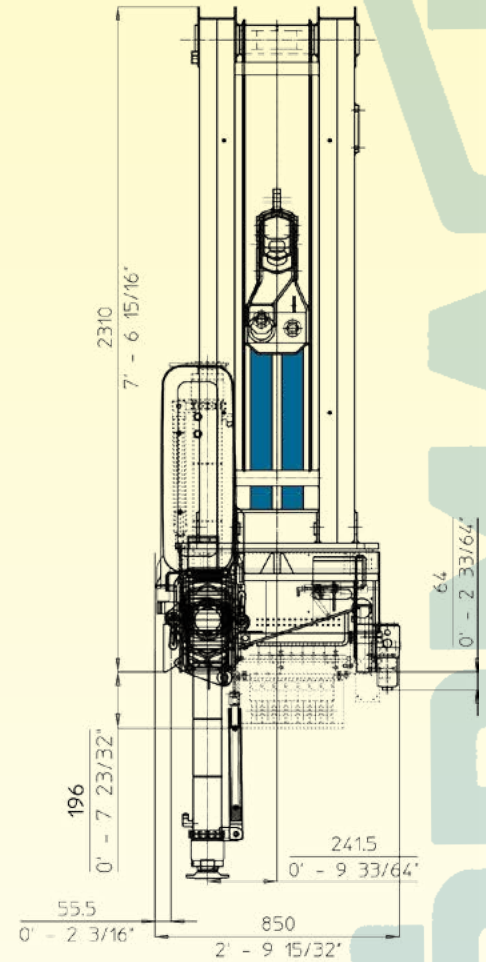
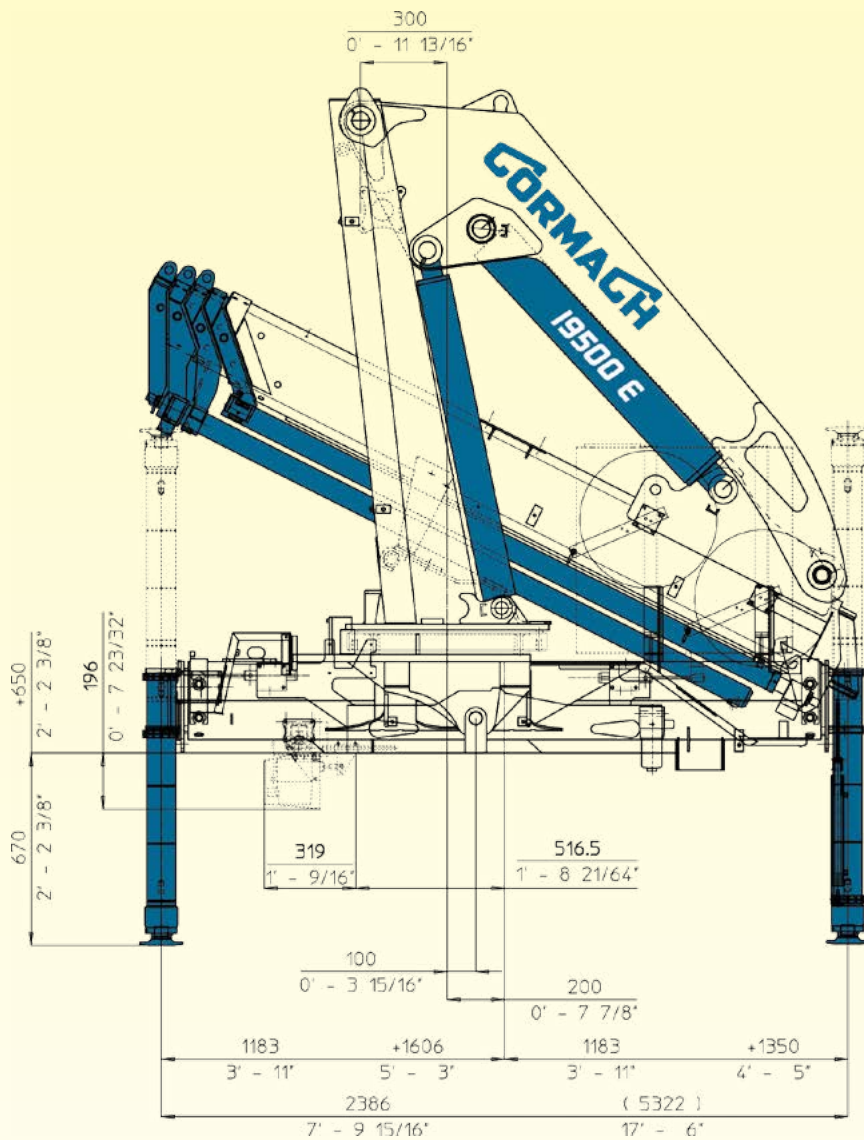
E4	E4	
19500 daN*m	141044 Lb*ft	Momento statico massimo al perno torretta • Max. static moment at the turret pin Moment statique max. a l'axe de la tourelle • Max. statisches ubmoment am kran Saulenbolzen
12.70 m	40'3"	Sbraccio idraulico • Hydraulic boom length Longueur du bras hydraulique • Hydraulic reichweite
		Sbraccio con prolunghe manuali • Boom length with manual extensions Longueur du bras avec rallonges manuelles
1750 daN*m	12658 Lb*ft	Coppia di rotazione • Slew torque • Moment de rotation • Drehmoment
32 s 360°	32 s 360°	Tempo di rotazione • Slewing speed • Temp de rotation • Schwenkgeschwindigkeit
1610+1350mm	5'3" + 4'5"	Uscita stabilizzatori (*) • Outriggers extensions (*) Sortie des bequilles (*) • Breite der abstützung (*)
5325 mm	17'6"	Larghezza stabilizzatori (**) • Outriggers width (**) Largeur des bequilles (***) • Breite der abstützung (***)
790 mm	2'7"	Lunghezza • Length • Longeur • Länge
2478 mm	8'2"	Larghezza • Width • Largeur • Breite
2310 mm	7'7"	Altezza • Height • Hauteur • Höhe
2320 kg	5115 lbs	Peso (senza olio e montaggio) • Weight (without oil and fitting) Poids (sans huile et montage) • Gewicht (ohne öl und ohne)
50 l/min	13 us gal/min	Portata pompa (***) • Pump delivery (***) • Capacité de la pompe (***) • Pumpenleistung (***)
290 bar	4206 psi	Pressione • Pressure • Pression • Druck
120 l	31 us gal	Capacità serbatoio olio • Oil tank capacity • Capacité de reservoir d'huile • Öl tank inhalt

STANDARD



OPTIONAL





STANDARD



Rotazione 360°
Rotation 360°
Rotation 360°
Drehbereich 360°



Radiocomando
Radio remote control
Radiocommandes
Funkfernsteuerung



Stabilizzatori gru base estendibili idraulicamente
Outriggers with hydraulic extension
Stabilisateurs avec elargissement hydraulique
Hydraulisch Ausfahrbare stützen



Limitatore di momento
Load limiting device
Limiteur de charge
Überlastabschaltung

OPTIONAL



Cestello
Basket
Nacelle
Personenkorb



Utilizzo con attrezzo
Additional accessories
Utilisation avec accessoire
Zubehör



Comando supplementare attivato
Additional function
section du distributeur activée
Zusatzfunktion



Rotazione continua
Continuous rotation
Rotation continue
Endlos schwenkwerk



Stabilizzatori gru base girevoli
Tilt up outriggers
Bequilles tournants
Drehbare stützen



Traversa ausiliaria fissa
Additional outriggers beam
Stabilisateurs supplémentaires
Zusätzliche Abstützbeine



Traversa ausiliaria estendibile
Additional outriggers with lateral extension
Stabilisateurs supplémentaires avec elargissement
Ausfahrbare zusatz-stützen



Verricello
Winch
Treuil
Seilwinde



Trattamento marino della gru
Marine treatment of the crane
Traitement marine de la grue
Marine behandlung des kranes



Plastre maggiorate
Large ground plates
Plaques stabilisateurs
Bodenplatten



CORMACH

Cormach s.r.l. - Via Madonnina, 27 - C.P. 199 - 25018 MONTICHIARI (BS) - ITALY
Tel. 0039.030.9656811 - Telefax 0039.030.9656846.7.8
E-mail: info@cormach.com - www.cormach.com

A fronte di una continua ricerca tecnologica i dati possono cambiare senza preavviso. Contattare il nostro Ufficio Commerciale per ulteriori informazioni.
Because of continuous technology research data can change without notice. Please, contact our Commercial Dept. for further information.
A cause de une continue recherche technologique les données peuvent changer sans préavis. Contacter notre Bureau Commercial pour des autres informations.
Irrtum und technische Änderung vorbehalten masse und gewichte unverbindlich. Unser Vertrieb erteilt Ihnen gerne weitere Auskünfte. Bitte rufen Sie uns an.
Debito a los continuos avances tecnológicos los datos pueden variar sin notificación previa. Para más información rogamos contacten nuestro Departamento Comercial.